

# To Be Known

Carsie Blanton

Organ:

A

guitar:

A



## VERSE 1

5

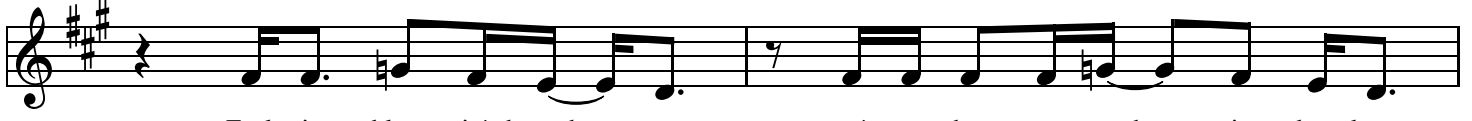
A



All the mel - an - cho - ly on the wind, low as a pray - er spo - ken,

7

D



Feel it blow - in' through ya, ev' - ry where your heart is bro - ken,

9

E<sup>2</sup>



Haunts you like a sha - dow when you're walk - ing through the ci - ty on your own.

11

A



## VERSE 2 and 3

13

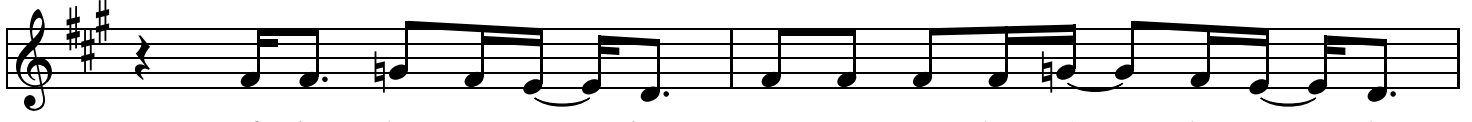
A



All the ghosts who hol - ler in the night try to make you lone - ly.  
Rem - ember when you thought some - body else was wait - in' for you,

15

D



If in des - per - a - tion, some - one says that you're the on - ly  
All your em - pti - ness would end, if on - ly they - 'd a - dore you,

17 E<sup>2</sup>

One they want, you go to sleep be - side them, but you wake up all a - lone.  
 How you had a child - 's way of dream - in', don't you miss it now you've grown?

19 A

And is - n't it all -

21 E E/G# A

you ev - er wan - ted, to be known

**CHORUS**

25 D A

hmmm - mmm oooooo - ooooo

29 E D

hmmm - mmm aaaaaa - aaaah

**VERSE 4**

33 A

All the mel - an - cho - ly on the wind, feel it shuf - fle through ya,

35 D

How it breaks you o - pen, 'til you're sing - in' ha - le - lu - ia,

37 E<sup>2</sup>

Ne - ver know the gra - vi - ty of grace un - til it hits you like a stone

39 A

And is - n't it all -

This musical staff shows measure 39. It begins with a treble clef and a key signature of three sharps (F#, C#, G#). The melody starts with a whole rest, followed by a quarter note G4, a quarter note A4, a quarter note B4, and a quarter note A4. The lyrics "And is - n't it all -" are positioned below the staff.

41 E E/G# A

- - you've ev-er wan - ted, to be known

This musical staff shows measure 41. It continues with the treble clef and three sharps key signature. The melody consists of quarter notes G4, A4, B4, and A4. The lyrics "- - you've ev-er wan - ted, to be known" are positioned below the staff.

45 D A

Ha - le - lu - ia ha - le - lu - ia

This musical staff shows measure 45. The melody consists of quarter notes G4, A4, B4, and A4. The lyrics "Ha - le - lu - ia ha - le - lu - ia" are positioned below the staff.

49 E D

Ha - le - lu - ia Ha - le - lu - ia Is-n't it all-

This musical staff shows measure 49. The melody consists of quarter notes G4, A4, B4, and A4. The lyrics "Ha - le - lu - ia Ha - le - lu - ia Is-n't it all-" are positioned below the staff.

53 E E/G# A

- - You ev - er wan - ted, to be known

This musical staff shows measure 53. It begins with a treble clef and three sharps key signature. The melody consists of quarter notes G4, A4, B4, and A4. The lyrics "- - You ev - er wan - ted, to be known" are positioned below the staff.